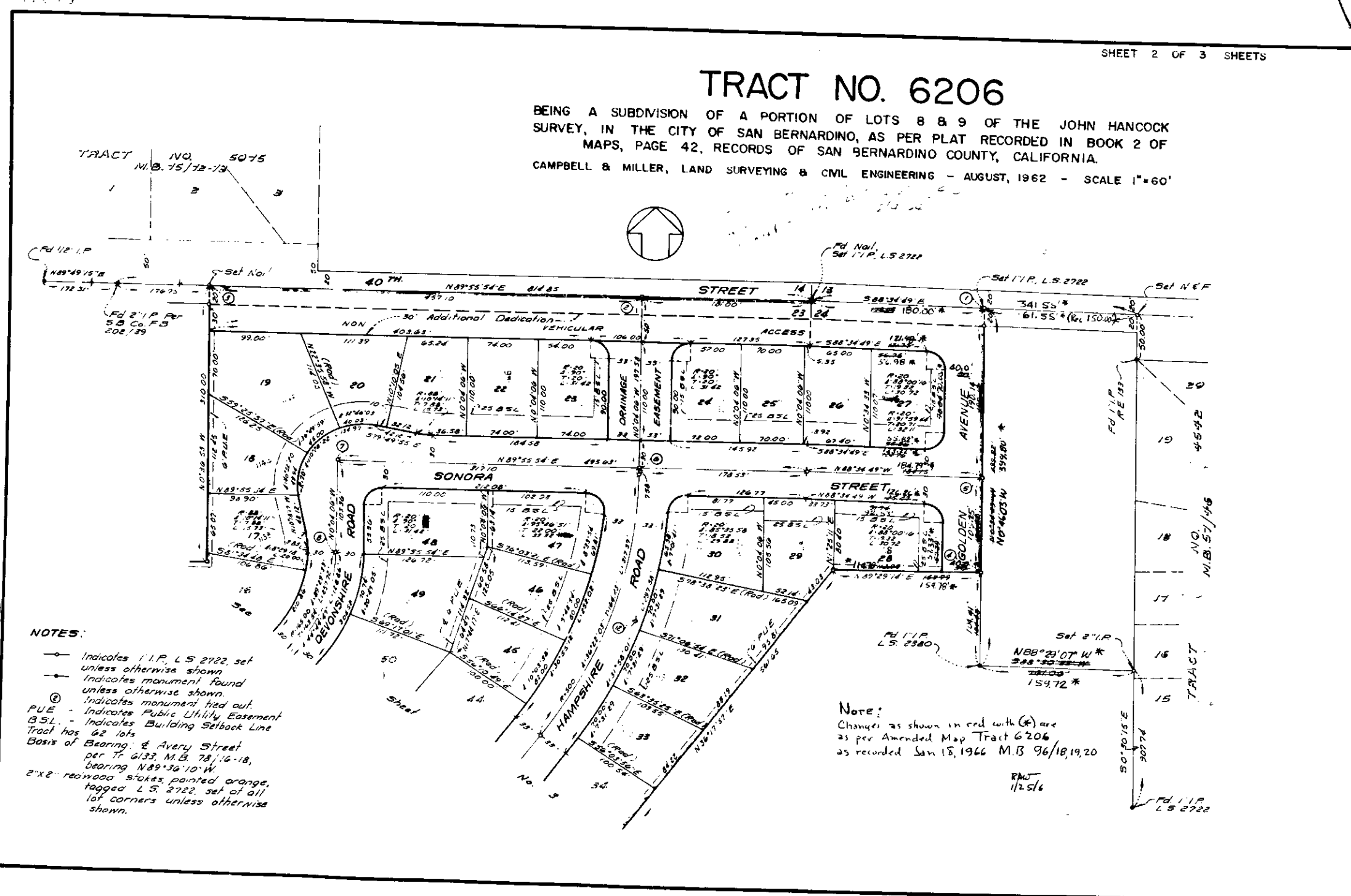
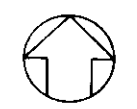


TRACT NO. 6206

BEING A SUBDIVISION OF A PORTION OF LOTS 8 & 9 OF THE JOHN HANCOCK SURVEY, IN THE CITY OF SAN BERNARDINO, AS PER PLAT RECORDED IN BOOK 2 OF MAPS, PAGE 42, RECORDS OF SAN BERNARDINO COUNTY, CALIFORNIA.

CAMPBELL & MILLER, LAND SURVEYING & CIVIL ENGINEERING - AUGUST, 1962 - SCALE 1"=60'



- NOTES:**
- Indicates I.P.P. L.S. 2722, set unless otherwise shown
 - Indicates monument found unless otherwise shown
 - ⊙ Indicates monument tied out unless otherwise shown
 - P.U.E. - Indicates Public Utility Easement
 - B.S.L. - Indicates Building Setback Line
 - Tract has 62 lots
 - Basis of Bearing: Avery Street per T. 6133 M.B. 78, 16-18, bearing N89°30'10"W
 - 2"x2" rebar stakes painted orange, tagged L.S. 2722, set of all lot corners unless otherwise shown.

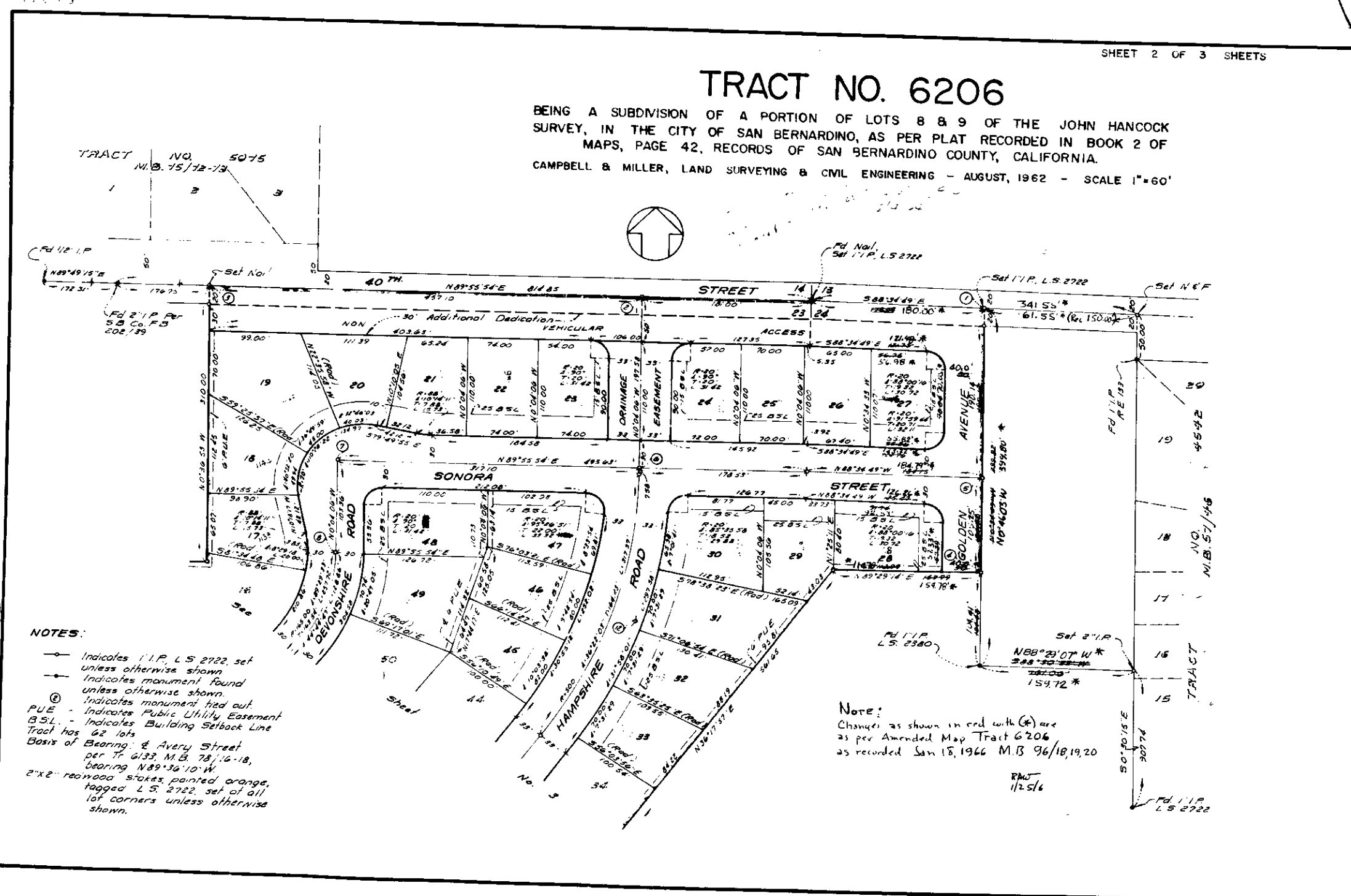
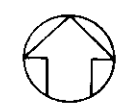
Note:
Changes as shown in red with (R) are as per Amended Map Tract 6206 as recorded San 18, 1966 M.B. 96/18, 19, 20

R.M.T. 1/25/66

TRACT NO. 6206

BEING A SUBDIVISION OF A PORTION OF LOTS 8 & 9 OF THE JOHN HANCOCK SURVEY, IN THE CITY OF SAN BERNARDINO, AS PER PLAT RECORDED IN BOOK 2 OF MAPS, PAGE 42, RECORDS OF SAN BERNARDINO COUNTY, CALIFORNIA.

CAMPBELL & MILLER, LAND SURVEYING & CIVIL ENGINEERING - AUGUST, 1962 - SCALE 1"=60'



- NOTES:**
- Indicates I.P.P. L.S. 2722, set unless otherwise shown
 - Indicates monument found unless otherwise shown
 - ⊙ Indicates monument tied out unless otherwise shown
 - P.U.E. - Indicates Public Utility Easement
 - B.S.L. - Indicates Building Setback Line
 - Tract has 62 lots
 - Basis of Bearing: Avery Street per T. 6133 M.B. 78, 16-18, bearing N89°30'10"W
 - 2"x2" rebar stakes painted orange, tagged L.S. 2722, set of all lot corners unless otherwise shown.

Note: Changes as shown in red with (R) are as per Amended Map Tract 6206 as recorded San 15, 1966 M.B. 96/18, 19, 20

R.M.T. 1125/6